



SCUOLA DERMATOLOGICA
SERGIO CHIMENTI



Evento accreditato ECM

ROMA, 10 - 11 FEBBRAIO 2017

PRINCIPI ED AGGIORNAMENTI IN DERMATOLOGIA

NH Hotel Vittorio Veneto - Corso d'Italia 1, 00198 Roma

Responsabili scientifici

Ketty Peris, Luca Bianchi, Maria Concetta Fargnoli



Segreteria Organizzativa

IL MIO CASO QUIZ... difficile, interessante o irrisolto

Alessandro Di Stefani

Istituto di Dermatologia

Fondazione Policlinico Universitario A. Gemelli

Università Cattolica del Sacro Cuore, Roma

Presidente AIDNID

(ASSOCIAZIONE ITALIANA DI DIAGNOSTICA NON INVASIVA
IN DERMATOLOGIA)

www.aidnid.org





SCUOLA DERMATOLOGICA
SERGIO CHIMENTI



- M, 65aa
- Pregressi BCC e nevi displastici

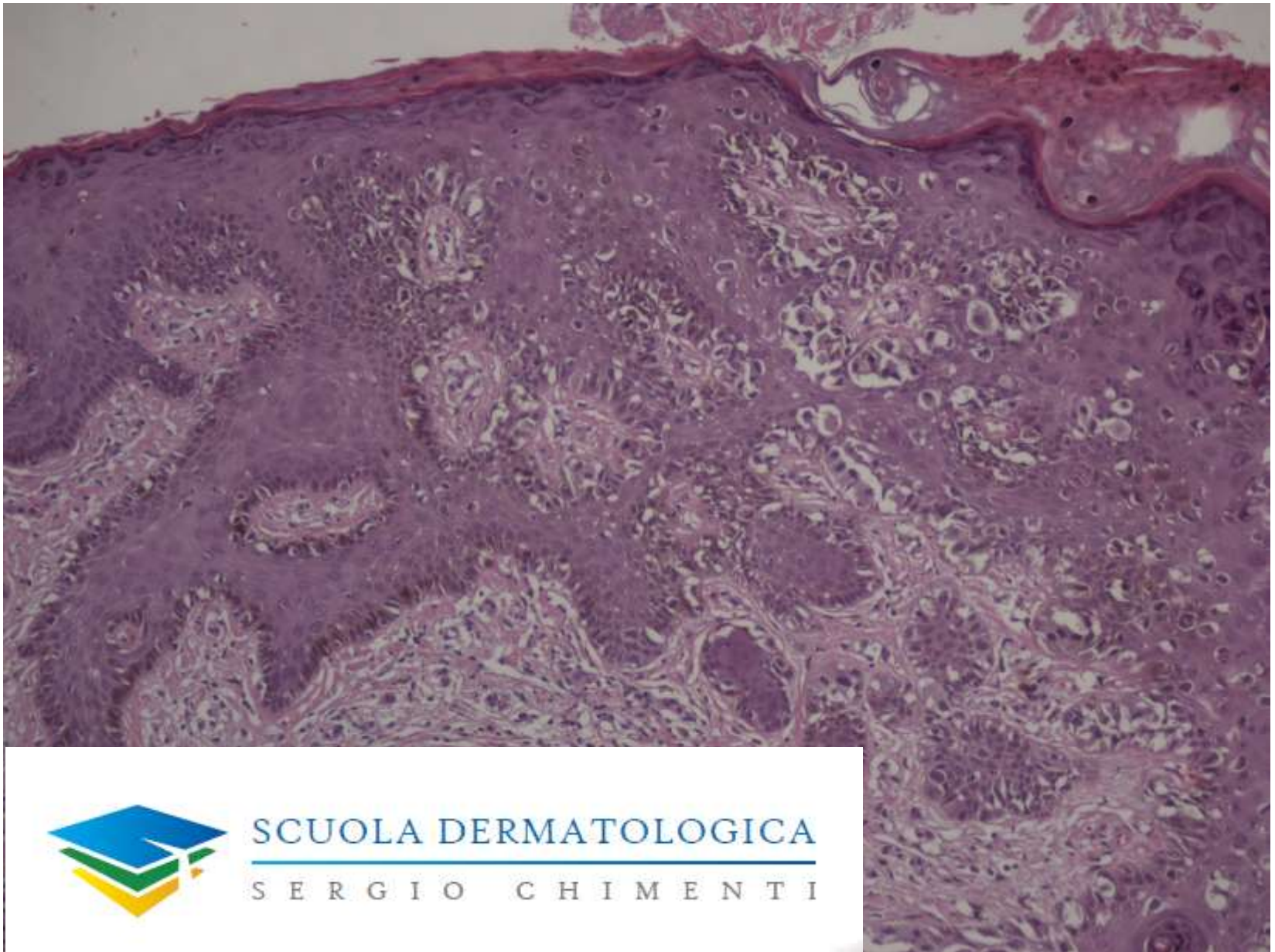


SCUOLA DERMATOLOGICA
SERGIO CHIMENTI

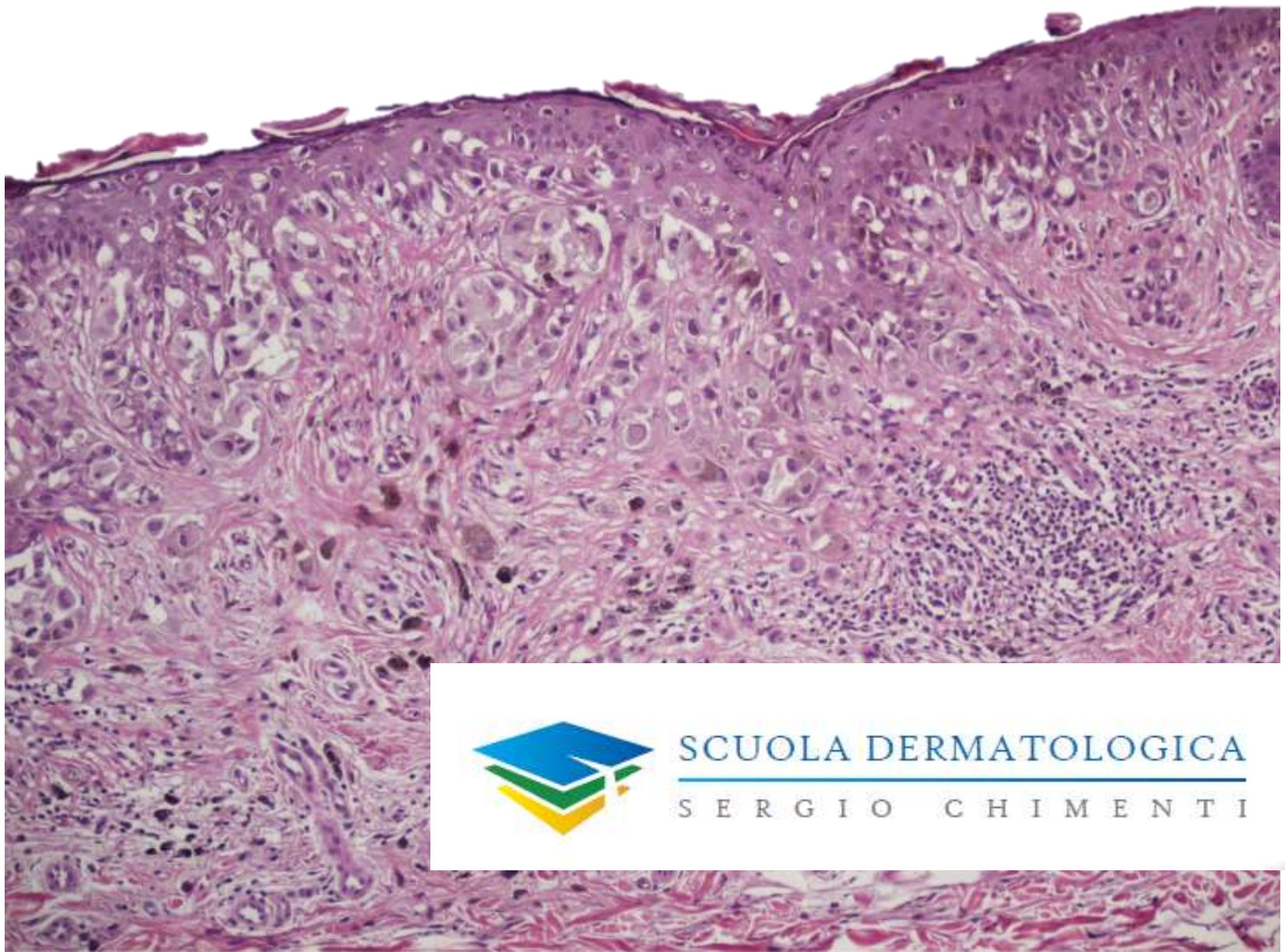
Dorsale dx

Pettorale sx





Melanoma 0,4mm



SCUOLA DERMATOLOGICA
SERGIO CHIMENTI

Melanoma 0,4mm



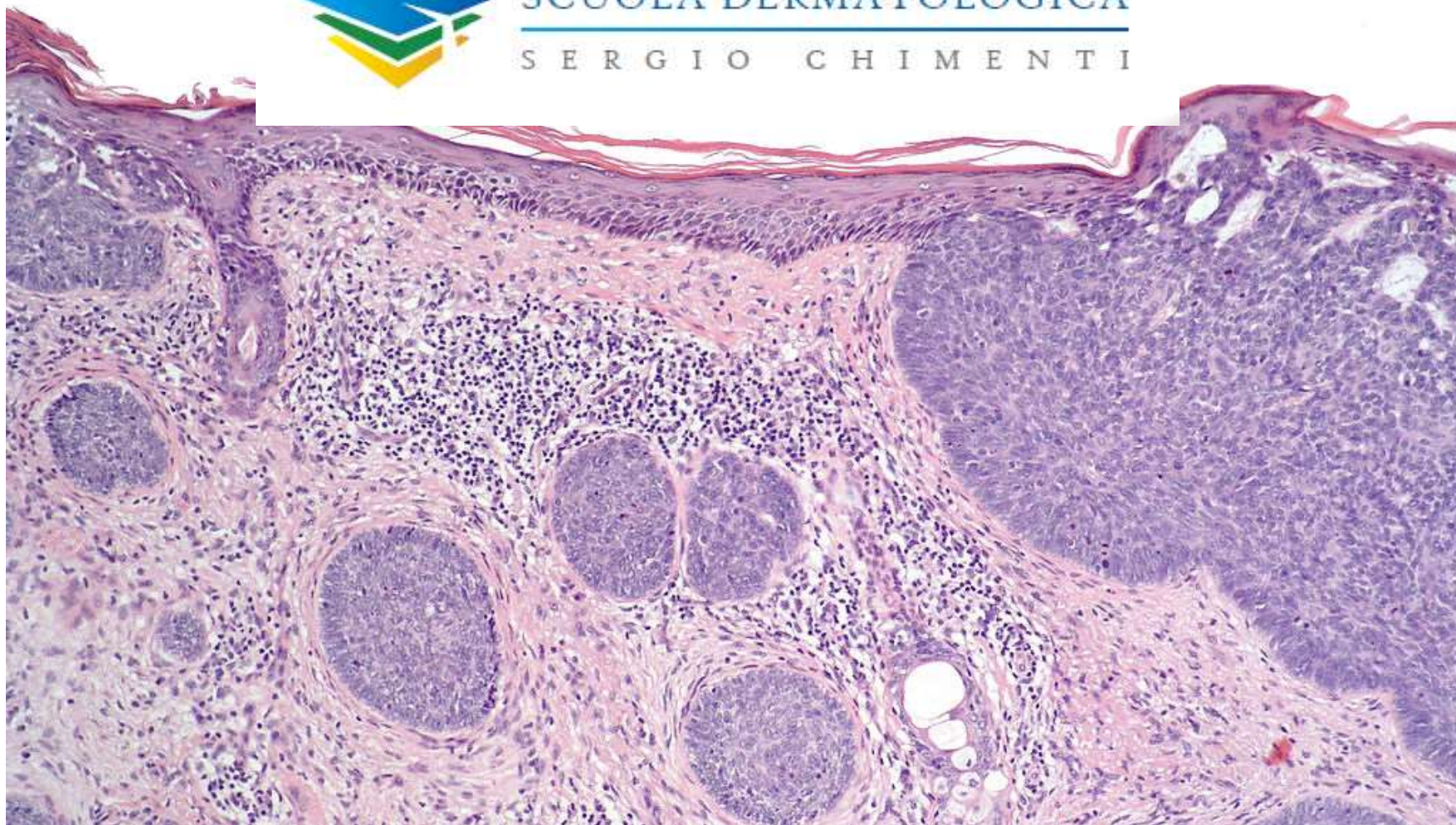
SCUOLA DERMATOLOGICA
SERGIO CHIMENTI



SCUOLA DERMATOLOGICA
SERGIO CHIMENTI



SCUOLA DERMATOLOGICA
SERGIO CHIMENTI

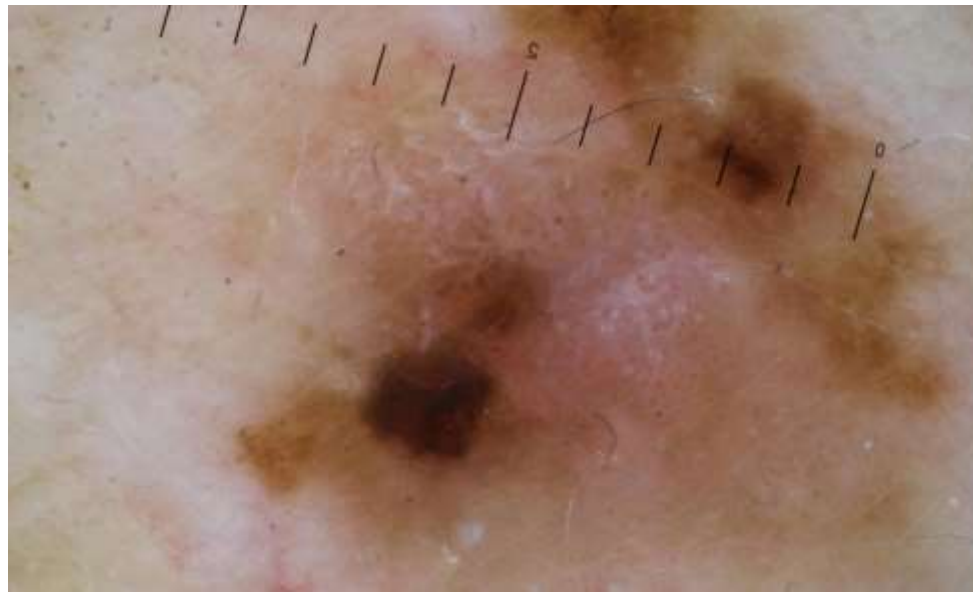


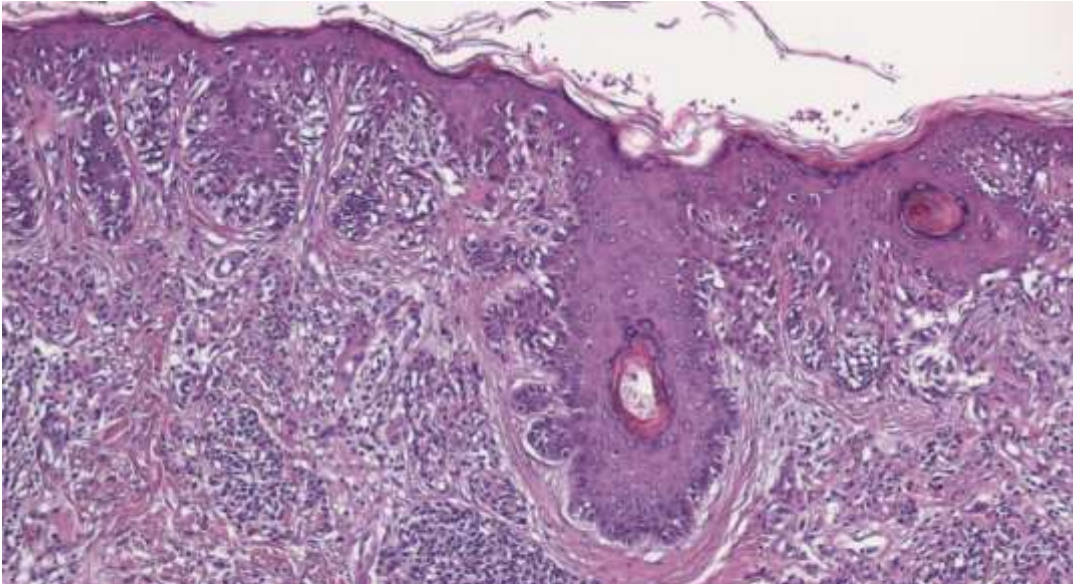


Dorsale dx

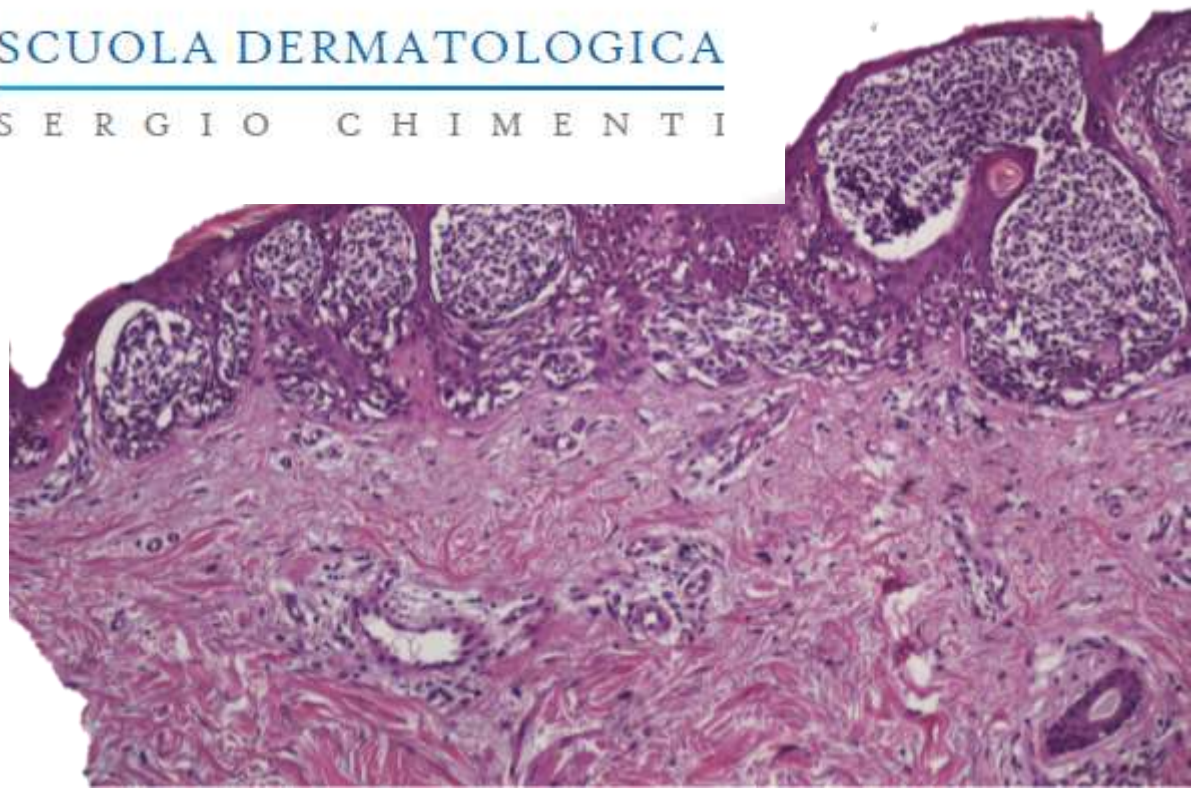


SCUOLA DERMATOLOGICA
S E R G I O C H I M E N T I





SCUOLA DERMATOLOGICA
SERGIO CHIMENTI





SCUOLA DERMATOLOGICA
SERGIO CHIMENTI

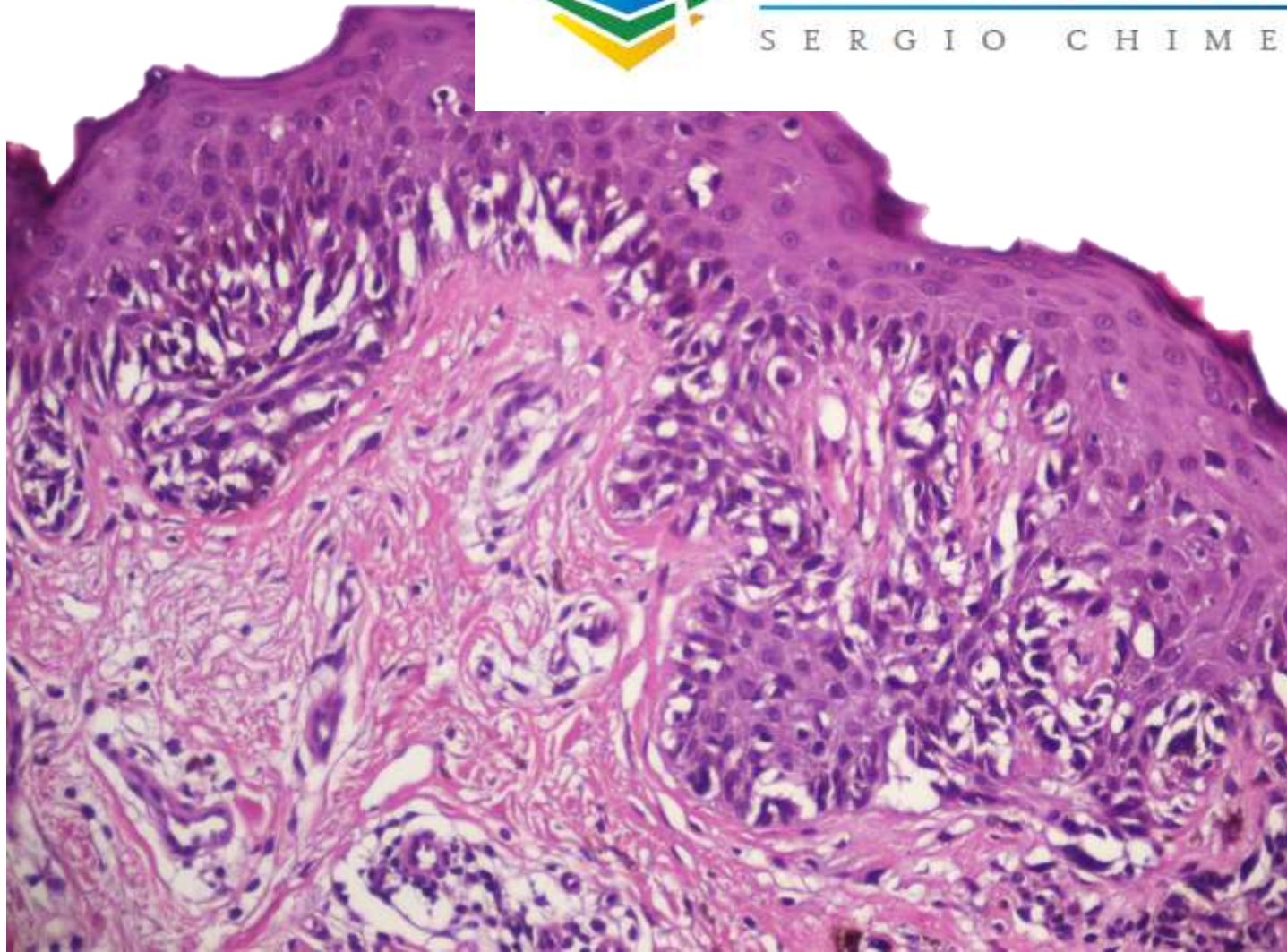




SCUOLA DERMATOLOGICA
SERGIO CHIMENTI



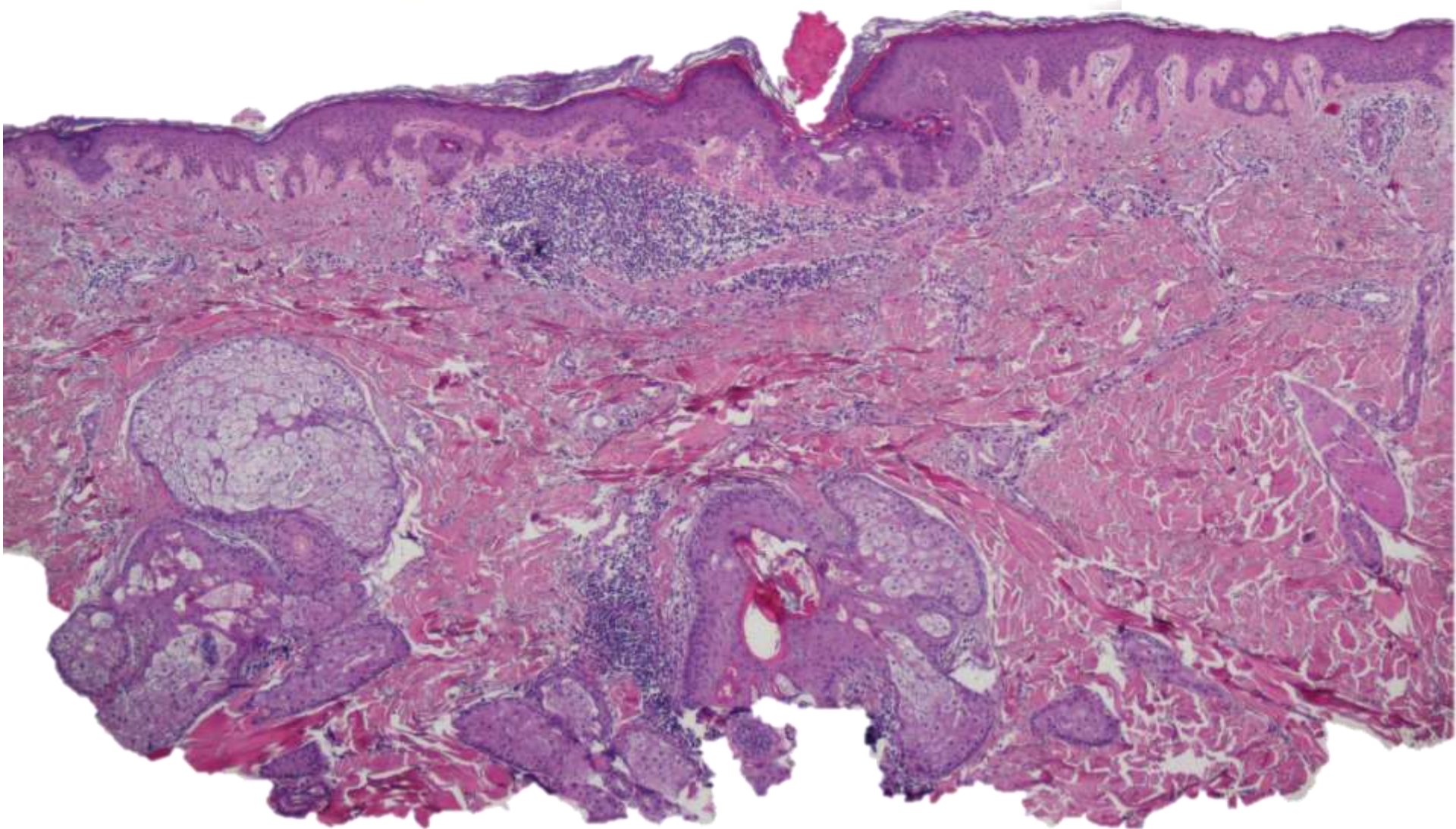
SCUOLA DERMATOLOGICA
SERGIO CHIMENTI





SCUOLA DERMATOLOGICA

S E R G I O C H I M E N T I



Galli-Galli disease

- Originally reported by Bardach et al. in 1982, who described the disease in two brothers
- A rare acantholytic variant of Dowling-Degos Disease (*reticulated pigmented anomaly of the flexures*),
- Autosomal dominant genodermatosis
- Approximately 30 cases reported in the literature
- Mutations in the keratin 5 gene (KRT5) have been identified in the majority of patients with DDD and in a small number of patients with GGD

CONCISE COMMUNICATION

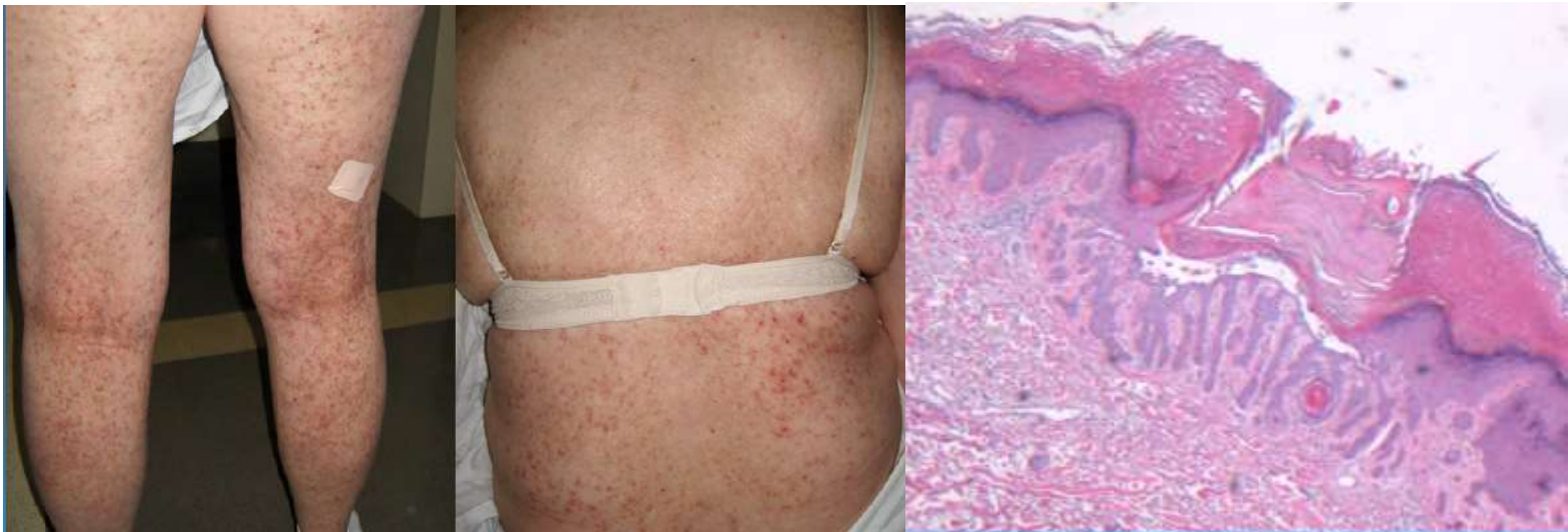
BJD
British Journal of Dermatology

Systematic mutation screening of *KRT5* supports the hypothesis that Galli–Galli disease is a variant of Dowling–Degos disease

S. Hanneken,* A. Rütten,† S.M. Pasternack,‡ S. Eigelshoven,* L. El Shabrawi-Caelen,§ J. Wenzel,¶
M. Braun-Falco,** T. Ruzicka,**** M.M. Nöthen,‡,†† R. Kruse* and R.C. Betz‡

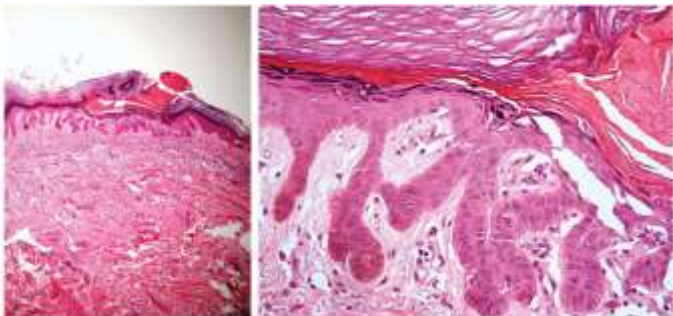
Galli-Galli disease

- Redish-brown, hyperkeratotic, scaly, pruritic papules
- Confluent, reticulated hyperpigmented macules
- Involvement of trunk, neck, and both flexor and extensor surfaces of the extremities (vs. Dowling Degos)
- No perioral scars, palmar pits, or nail changes
- Histopathologically, there is acantholysis and suprabasal lacunae
- Elongated epidermal rete ridges with bud-like filiform projections, suprapapillary thinning
- Hyperpigmentation of basal layer



Atypical variant of Galli–Galli disease

- Recently, an atypical variant of Galli–Galli disease, characterized by localized, erythematous, excoriated papules and brown lentigo-like macules on the trunk and the extremities
- in the absence of reticulate hyperpigmentation of the flexures, has been described



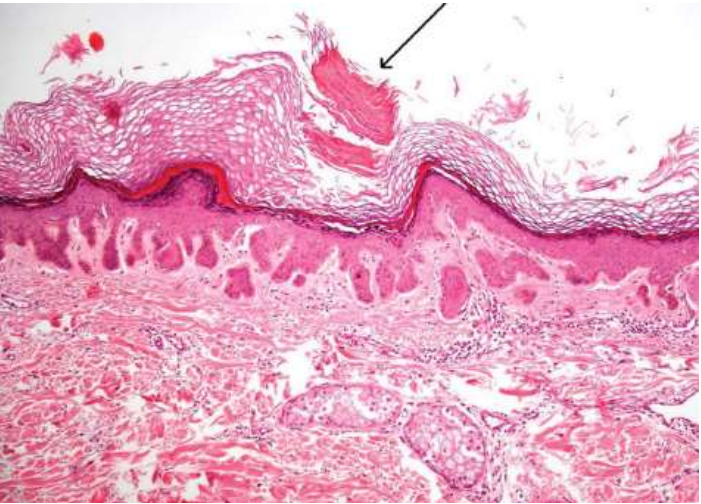
El Shabrawi-Caelen L, Ru"tten A, Kerl H. The expanding spectrum of Galli-Galli disease. J Am Acad Dermatol. 2007;56:S86–S91.
Mota R, Reifemberger J, et al. Classical and atypical presentations of Galli-Galli disease . Hautarzt. 2010;284:284–286.

d.d. Grover's disease

- transient acantholytic dermatosis
- is a transient dermatosis which clinically presents as an eruption of erythematous excoriated papules located on the trunk
- histologically characterized by dyskeratosis and acantholysis

Atypical Variant of Galli–Galli Disease (Grover-Like Eruption With Lentiginous Freckling) in a Liver Transplant Patient

Franco Rongioletti, MD,† Valentina Fausti, MD,* Konstantina Christana, MD,*
Martina Montinari, MD,* Aurora Parodi, MD,* and Roberto Fiocca, MD†*



Dermoscopic clues to diagnose acantholytic dyskeratosis

Francesca Specchio¹, Giuseppe Argenziano², Danica Todorovic-Zivkovic³, Elvira Moscarella²,
Aimilios Lallas², Iris Zalaudek⁴, Caterina Longo²



Grover's disease and cutaneous melanoma: a fortuitous association or a paraneoplastic case?

Tognetti L, Nami N, Fimiani M, Rubegni P.

Vol. 150 - No. 2

GIORNALE ITALIANO DI DERMATOLOGIA E VENEREOLOGIA



Temporal coincidence of the skin clearing of Grover's disease with the melanoma excision is highly suggestive of a pathogenetic correlation

AIDNID

ASSOCIAZIONE ITALIANA di DIAGNOSTICA
NON INVASIVA in DERMATOLOGIA



Evento accreditato ECM

congresso annuale

AIDNID 2017

16-18 Febbraio MODENA

Forum Monzani - Via Aristotele 33

Presidente del Congresso: **C. Longo**

Co-Presidente: **G. Pellacani**

Segreteria Scientifica:

G. Argenziano, S. Bassoli,
E. Benati, S. Borsari,
S. Ciardo, A. Di Stefani,
F. Farnetani, E. Moscarella,
S. Ribero



Segreteria Organizzativa



AIDNID



AIDNID

Presidente
Alessandro Di Stefani

Segretario
Caterina Longo

Tesoriere
Niccolò Nami

Consiglio Direttivo
Marco Ardigo
Alessia Gori
Francesco Lacarrubba
Elvira Moscarella

Past President
Vincenzo De Giorgi

